



# WORLDWIDE ELECTRIC MOTOR DATA SHEET

## WPMDC34-18-24V-56CB



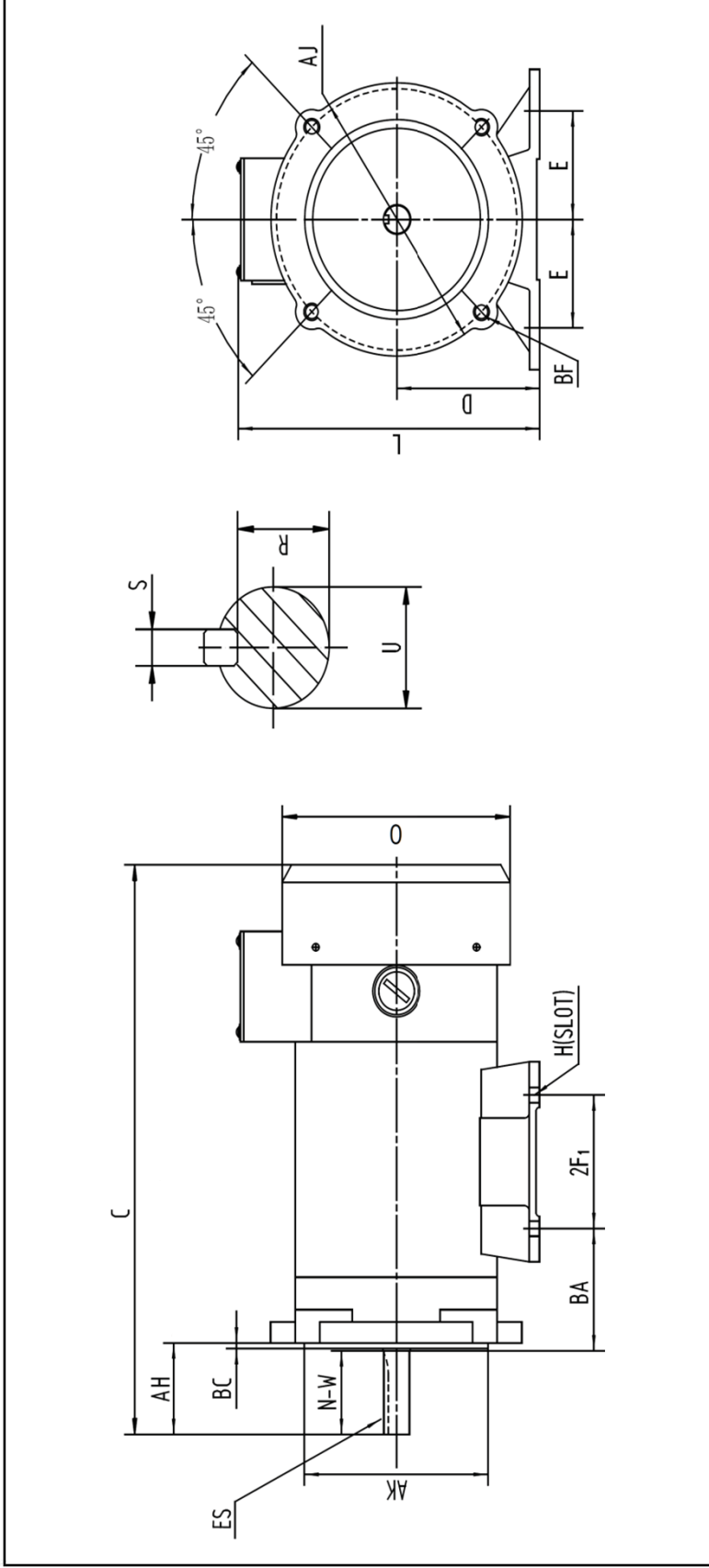
HP	3/4
RPM / POLES	1800 / 4
ARMATURE VOLTAGE	24 V
FRAME	56C
ENCLOSURE	TEFC
ARMATURE FULL LOAD AMPS	30.6 A
FULL LOAD TORQUE	2.19 LB. FT.
FORM FACTOR	1.35
SERVICE FACTOR	1.0
INSULATION CLASS	F
AMBIENT TEMP.	40° C
BASE TYPE	C-FACE - REMOVABLE
SHAFT	KEYED
DE BEARING	6203
ODE BEARING	6203
MOUNTING	F3
ROTATION	CW
WIRE TYPE	LOOSE WIRE
WIRE HOUSING	JUNCTION BOX
APPROX. WEIGHT	28 LBS.
FL EFFICIENCY	75.0%



REVISED - 01/01/11



WORLDWIDE ELECTRIC MOTOR DRAWING  
**WPMDC34-18-24V-56CB**



**MOUNTING**

E	E2	2F1	2F2	2F3	H	BA	C	D	L	O
2.44	---	3	---	---	0.34	2.75	13.51	3.5	7.63	5.57

**KEY**

KEY	KEYSEAT	FLANGE	SHAFT
AH	BC	ES	S
2.06	0.12	1.41	0.188
		R	
		0.517	
		AJ	
		5.875	
		AK	
		4.5	
		BF	
		3/8-16	
		N-W	
		1.88	
		U	
		0.625	

ALL DIMENSIONS IN INCHES